



TECHNICAL INFORMATION

36 Myeongji ocean city 9-ro,
Gangseo-gu, Busan, 46762
The Republic of Korea

Phone : +82-70-8799-8306
Fax : +82-70-8799-8319
E-mail : statutory@krs.co.kr
P.I.C : Kim Moon-kyoung

No : 2020-ETC-01
Date : 20 January, 2020

Subject : Designation of 『SOX Emission Control Area』 in Republic of Korea

The Ministry of Oceans and Fisheries has announced the 『SOX Emission Control Area』 in major Korea Port, which strengthens the sulfur content standard of ship fuel oil to 0.1% or less according to Article 10 (1) of the 『The Special Act on the Improvement of Air Quality in Port Areas, Etc』.

1. Content

A. Emission Control Port : Busan Port, Incheon Port, Ulsan port, Yeosu Port, Gwangyang Port(Including Hadong port), Pyeongtaek-Dangjin Port

B. Emission Control Area

- 1) (Incheon, Pyeongtaek-Dangjin Area) 37 degrees 36 minutes 00 seconds north latitude, 126 degrees 33 minutes 42 seconds east longitude (near Daebeok-ri, Gimpo-si), 37 degrees 10 minutes 00 seconds north latitude, 126 degrees 06 minutes 30 seconds (south-end of Mungap island in Incheon), 37 degrees 02 minutes 54 seconds north latitude, Sea level inside the line that connects 126 degrees 29 minutes 00 seconds (near Seokmungak, Dangjin-si)
- 2) (Yeosu and Gwangyang Ports) 34 degrees 35 minutes 24 seconds north latitude, 127 degrees 48 minutes 20 seconds east longitude (Southeast end of Dolsan-do, Yeosu) 34 degrees 35 minutes 24 seconds north latitude, 128 degrees 00 minutes 26 seconds north latitude 34 degrees 42 minutes 42 Cho, line connecting the branch at 128 degrees 00 minutes 26 seconds (Namhae-gun Imman) and 34 degrees 56 minutes 22 seconds north, 127 degrees 52 minutes 06 seconds east and 34 degrees 56 minutes 46 seconds north, and 127 degrees 51 minutes

56 seconds east Sea level inside the line connecting points (Noryang Bridge)

- 3) (Busan sea area) 35 degrees 09 minutes 36 seconds north latitude, 129 degrees 11 minutes 32 seconds east longitude (Southeast end of Cheongsapo, Middle East, Busan), 35 degrees 09 minutes 04 seconds north latitude, 129 degrees 11 minutes 44 seconds east long, Appendix 1 of Enforcement Decree of the Maritime Safety Act The outer arc of the special area of traffic safety in Busan area, 34 degrees 58 minutes 46 seconds north, 129 degrees 04 minutes 14 seconds east, 34 degrees 55 minutes 00 seconds north, 128 degrees 50 minutes 00 seconds east, 34 degrees 58 minutes north latitude 41.5 Second, east of 128 degrees 49 minutes 19.5 seconds (east side of the entrance of the port of Gadeok-su-do), north latitude 35 degrees 02 minutes 01.4 second, east of 128 degrees 47 minutes 37.8 seconds (buoy of the 12th port of Gadeoksudo arrival port), 35 degrees 03 minutes north of 19.5 Sea level inside the line that connects the points at 128 degrees 43 minutes 23.5 seconds (East Route No. 20 Buoy, Gadeok-Su Island), 35 degrees 05 minutes 42 seconds north, and 128 degrees 42 minutes 53 seconds east (western end of Deok-dong, Changwon-si)
- 4) (Busan port west side sea area) 35 degrees 03 minutes 19.5 seconds north latitude, 128 degrees 43 minutes 23.5 seconds east longitude (buoy No. 20 route of entry port of Gadeoksudo island), 34 degrees 58 minutes 30 second north latitude, 128 degrees 45 minutes 21 second longitude (Garsan-do, Geoje-si)), 34 degrees 55 minutes 00 seconds north latitude, 128 degrees 50 minutes 00 seconds east longitude, 34 degrees 58 minutes north latitude 41.5 seconds northeast, 128 degrees 49 minutes 19.5 seconds east longitude (east side of the entrance to the port of Gadeoksudo), 35 degrees 02 minutes 01.4 seconds north latitude, Line that connects the points at 128 degrees 47 minutes 37.8 seconds in Tokyo, buoyed at No. 12 entry port of Gadeok-Sudo, 35 degrees 03 minutes and 19.5 seconds north latitude, and buoys at No. 20 buoy at No. 20, 128 degrees 43 minutes and east longitude. Sea surface inside (only for ship using Busan New Port)
- 5) (Ulsan port area) Sea area within the arc of 6.0 mile (outside arc of the special traffic safety

area in Ulsan area) centered on 35 degrees 24 minutes 37 seconds north latitude and 129 degrees 27 minutes 52 seconds long east and Ulsan port according to Article 3 of the Port Act Sea level (including Mipo Port)

*** Refer to below drawing**

C. Effective date

1) From 1st September, 2020 to 31st December 2021

: From 1 hour after completion of anchoring or mooring to 1 hour before completion of heave in anchor or de-berthing

2) On or after 1st January, 2022

: From entry into Sox Emission control Area until the exit

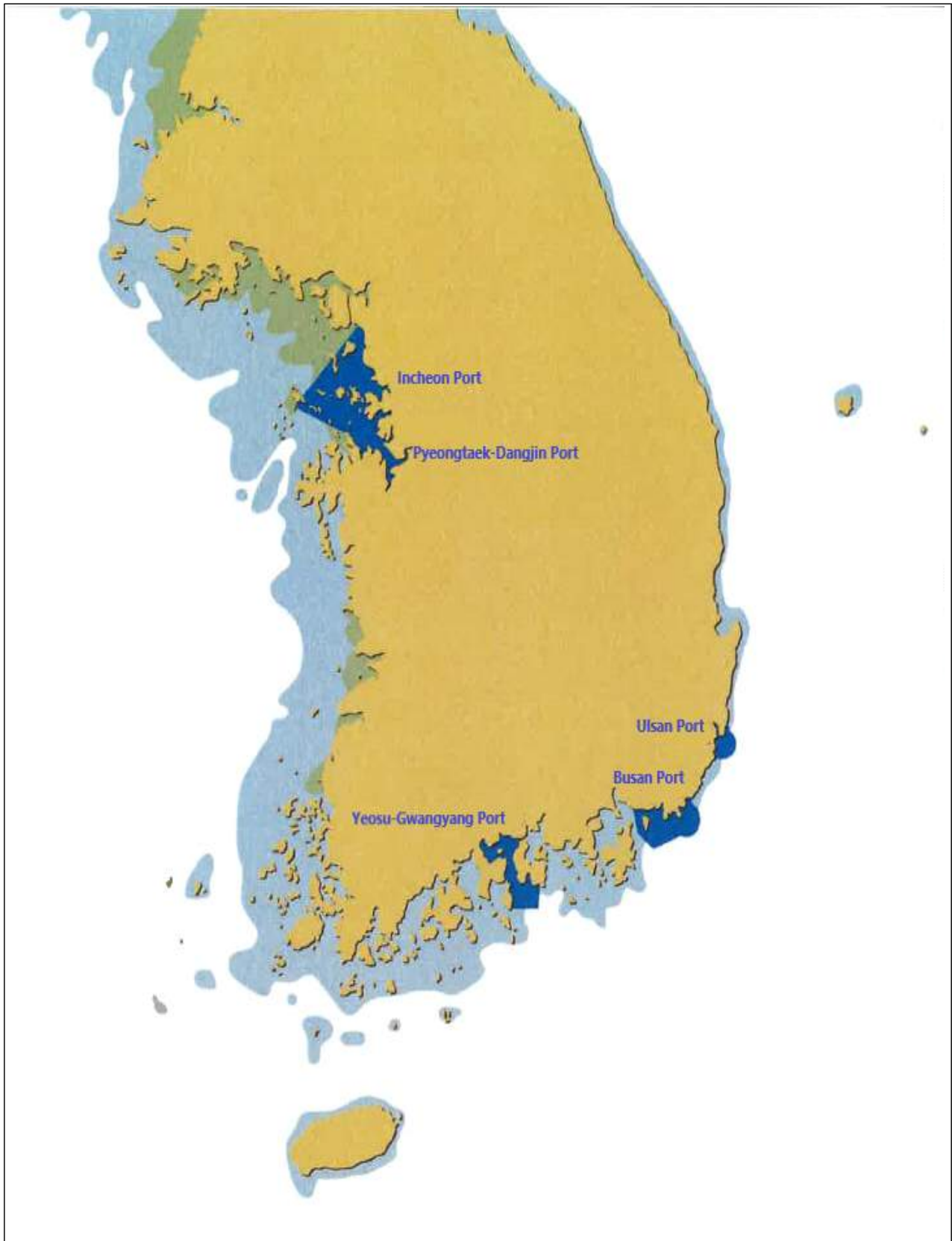
Distributions : KR surveyors, Ship owners, Other relevant parties

Disclaimer :

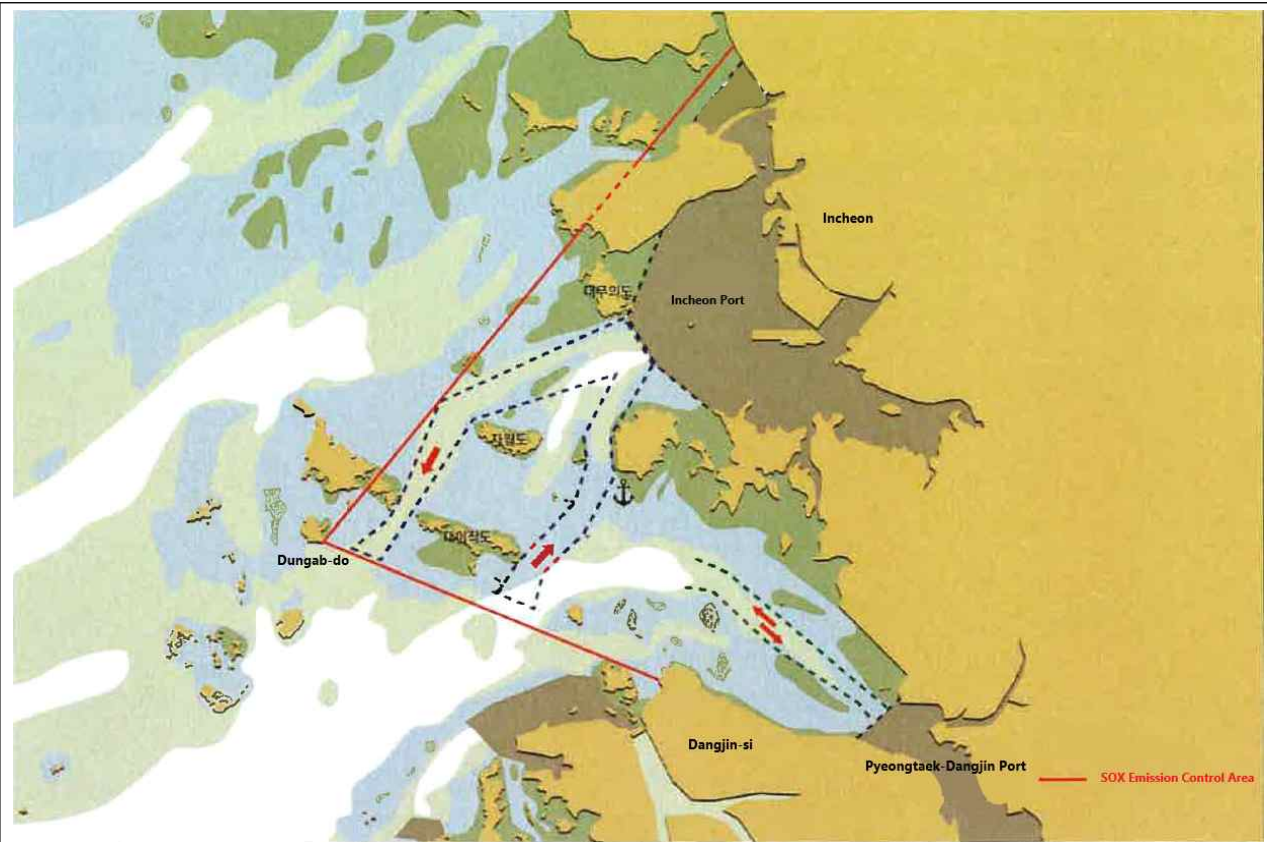
Although all possible efforts have been made to ensure correctness and completeness of the contents contained in this information service, the Korean Register is not responsible for any errors or omissions made herein, nor held liable for any actions taken by any party as a result of information retrieved from this information service.

Refer

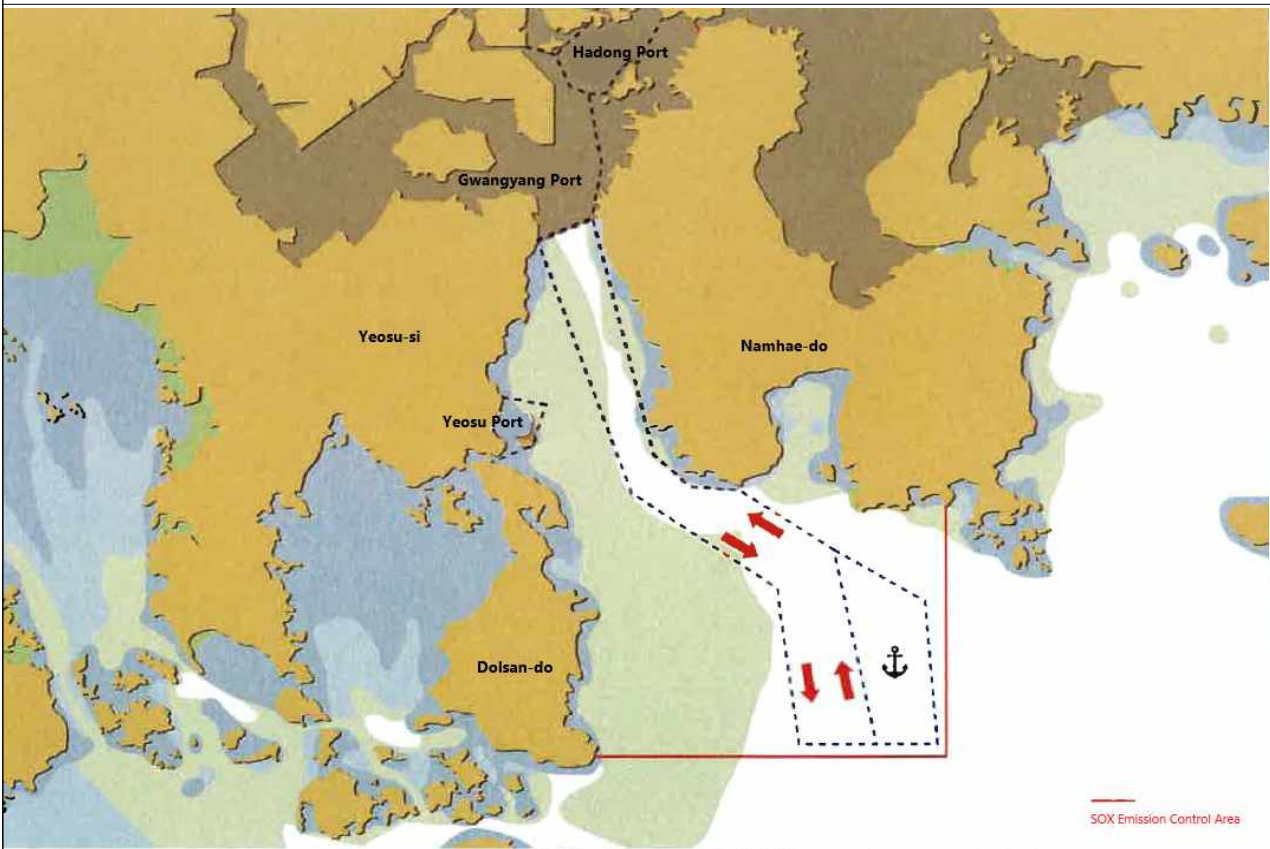
Drawing for Sox Emission Control Area



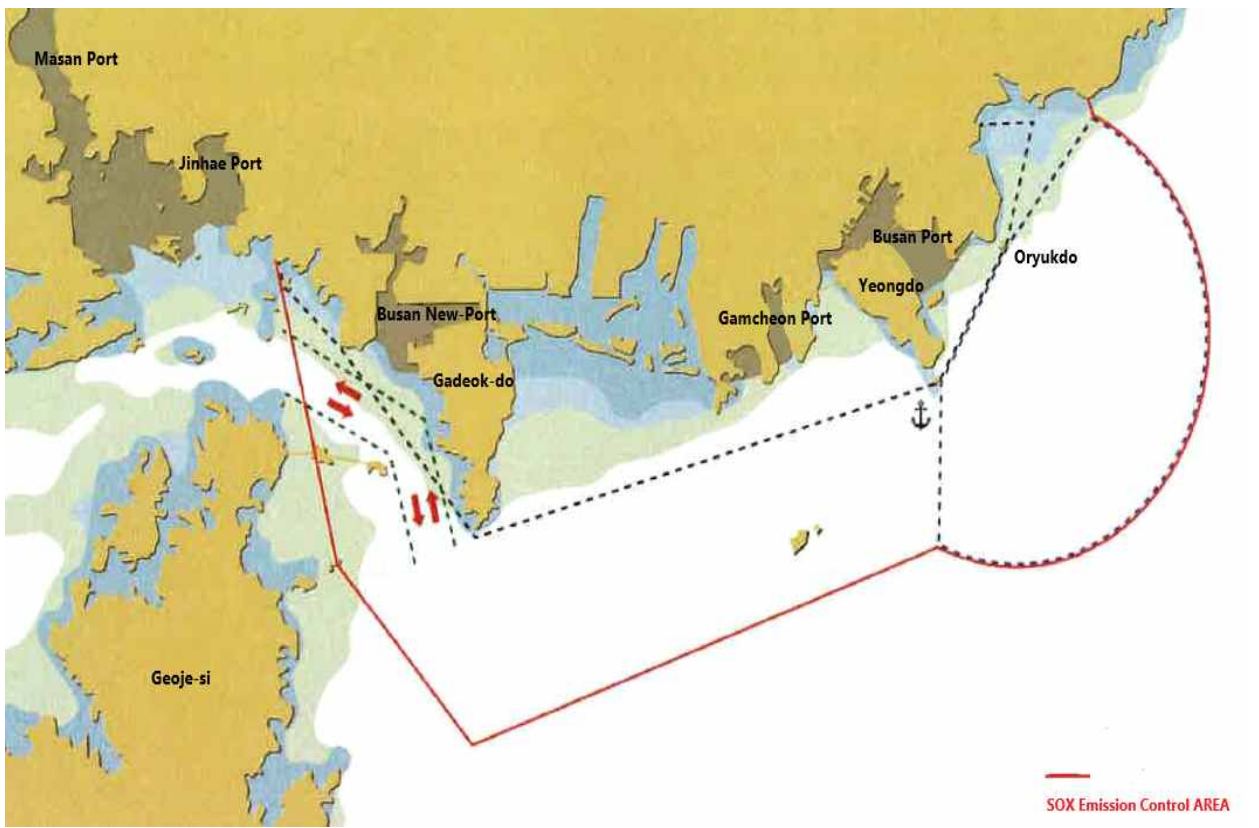
SOX Emission Control Area



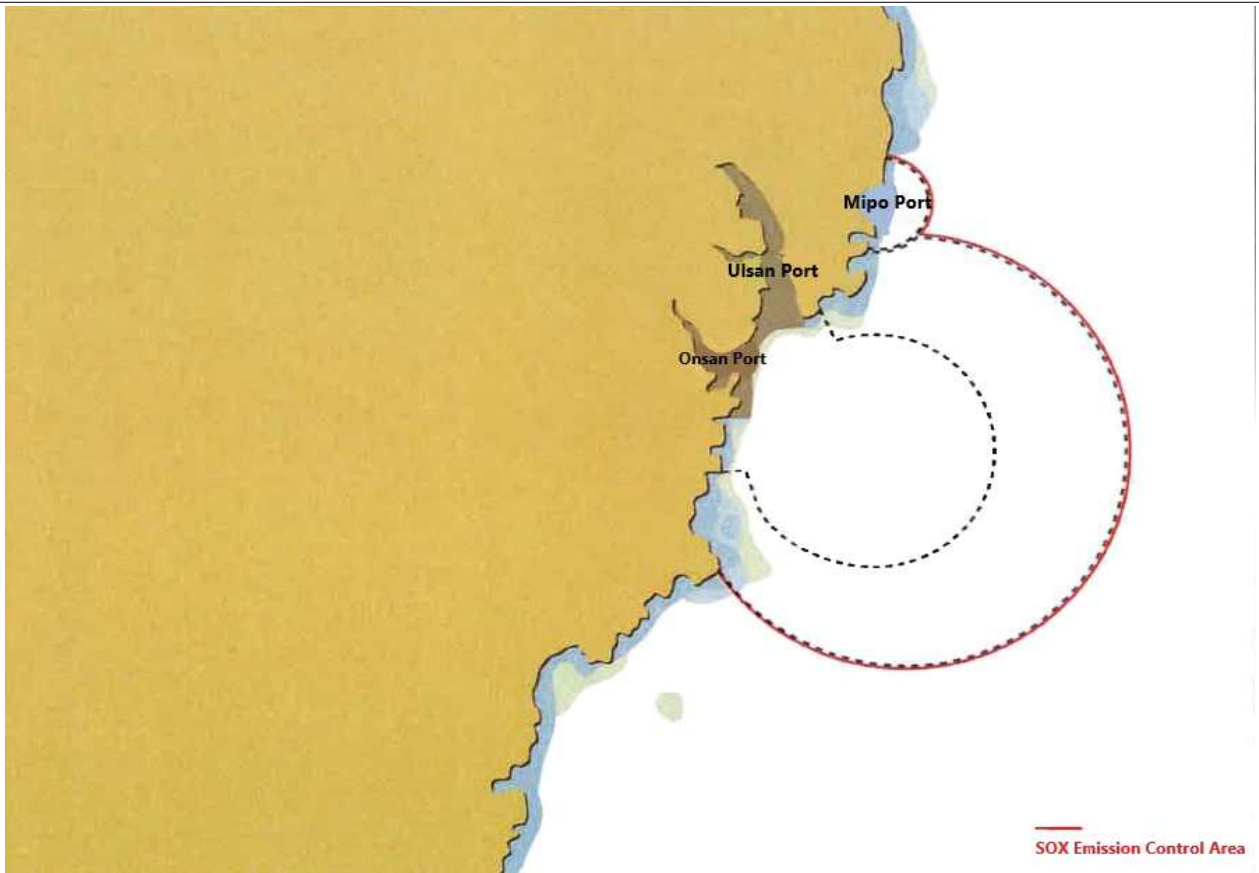
Incheon, Pyeongtaek-Dangjin Area



Yeosu, Gwangyang Area



Busan Area



Ulsan Area